

OFFICIAL



# 110th LLC Meeting Presentation Slides

**Thursday 7<sup>th</sup> November 2024**

The AWE Rec Soc, Aldermaston

OFFICIAL

# Agenda

- 9.30 Introductions / networking / refreshments
- 10.00 Welcome and introductions
- 10.15 AWE Communications
- 10.25 Development update
- 11.05 Infrastructure investment update
- 11.35 Estates and Liabilities update
- 11.50 Community update
- 12.15 Lunch
- 13.00 Regulators' update
- 13.45 ESH&Q update
- 14.10 Emergency planning update
- 14.40 UVS Team update
- 15.00 Any other business
- 15.15 Close



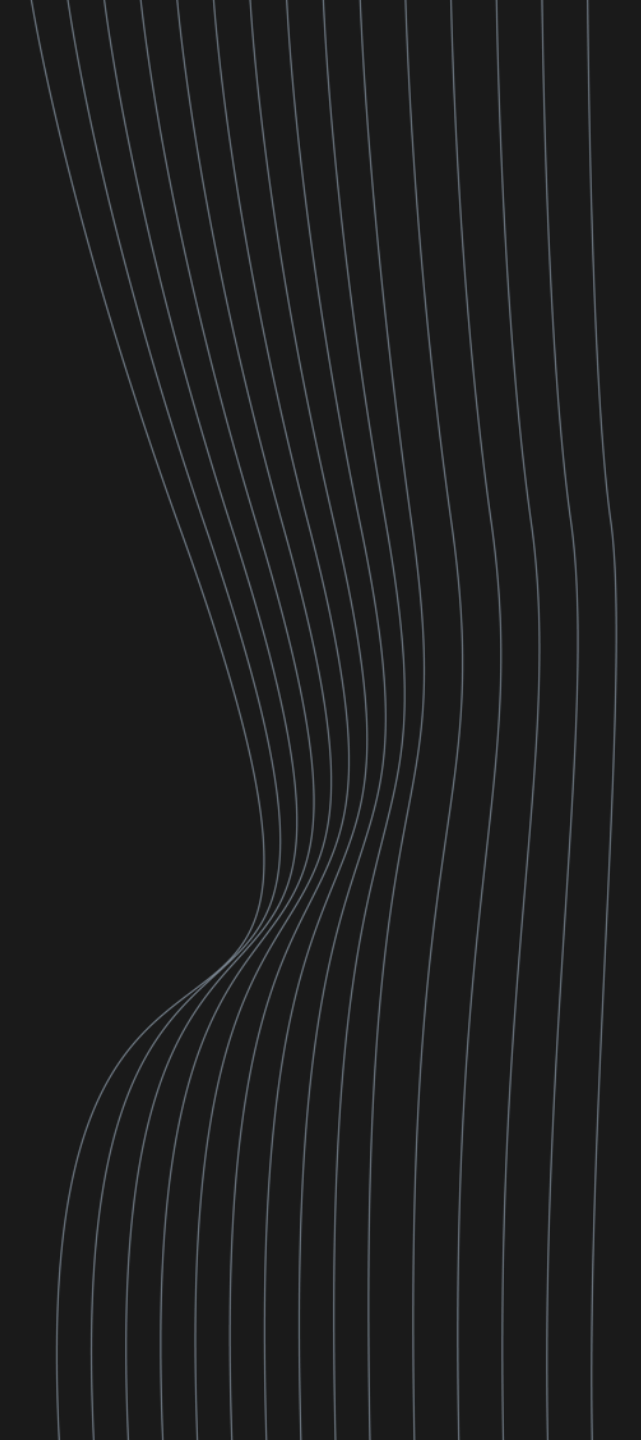
# Chair's Opening Remarks

OFFICIAL



# AWE Communications Update

OFFICIAL

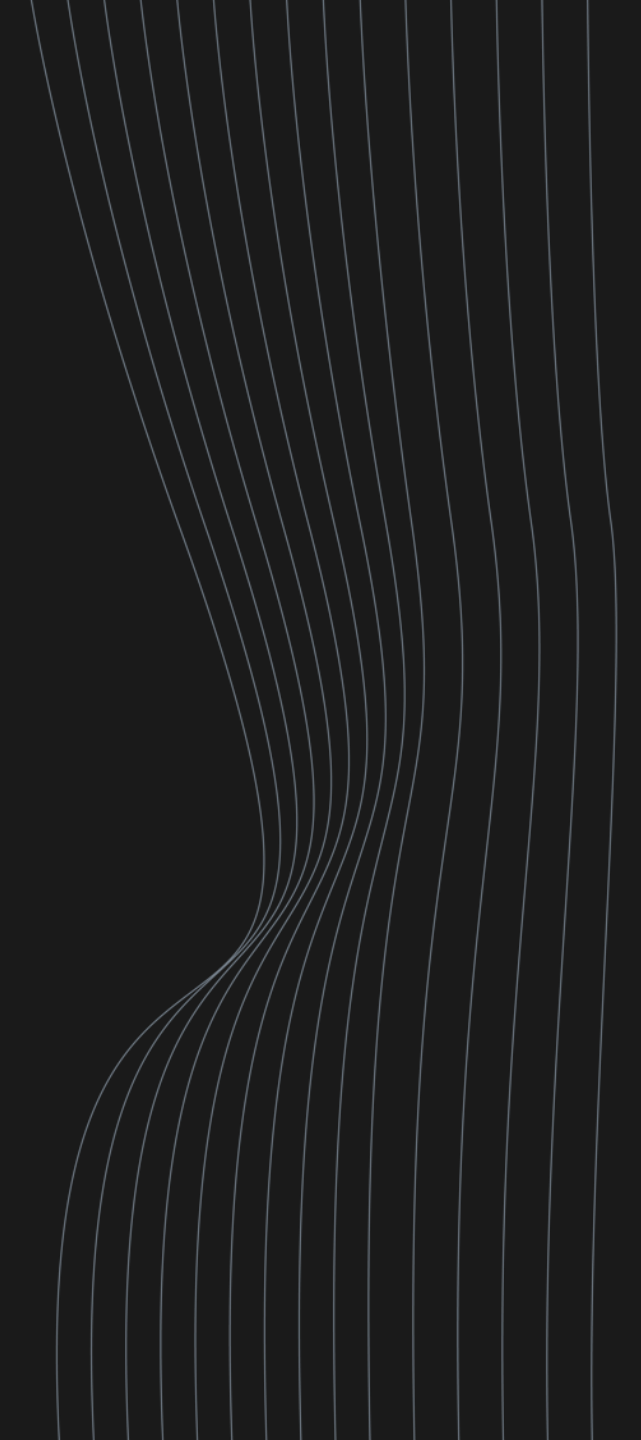


OFFICIAL



# AWE Development Update

OFFICIAL



# Topics

- Future Planning – focus on environmental agenda
- External planning
- Travel and Transport update
- Postcode map

# Future Planning - Biodiversity & Future Development

## **Avoid, mitigate, compensate:**

- Ecological and heritage surveys undertaken in advance of all construction and demolition works
- Impact of lighting and noise always considered
- Habitats of Principal importance protected wherever possible
- Aim to integrate biodiversity into new builds
- Any unavoidable losses are compensated

## **Enhance – (Biodiversity Net Gain (BNG):**

- All new builds on track to meet at least 10% BNG
- Climate resilient landscaping
- Local Nature Recovery Network engagement
- MOD policy extends to some permitted development
- BNG delivery being considered as a coordinated site wide approach

- **Enhance – Nature Recovery Plan:**
- Utilise Nature Based solutions
- Enhance and protect tree planting
- Increase pollinator habitat
- Natural Capital Approach
- Sharing best practice with nuclear and defence sector
- Conservation led surveys for key species
- Positive feedback from Environment Agency



# External Planning Update

- West Berkshire Local Plan
  - Further hearing finished with no proposals for development in the DEPZ
- Wokingham Local Plan
  - Submission Draft out to consultation with view to submitting Dec/Jan
  - No allocations proposed in the DEPZ
- Basingstoke and Dean Local Plan
  - Held a call for sites
  - Submission Draft due to be published winter 2024/25
- Appeal Decisions
  - The Planning Inspectorate (PINS) has supported the principle of no new residential development inside of the DEPZ (August 2024).
  - Planning appeal public inquiry for another residential development inside Burghfield DEPZ held in September 2024. ONR, WBDC Emergency Planning, AWE and MOD appeared at inquiry to object to the development. Decision from PINS expected sometime in November.
  - More appeals expected in the new year in Wokingham.

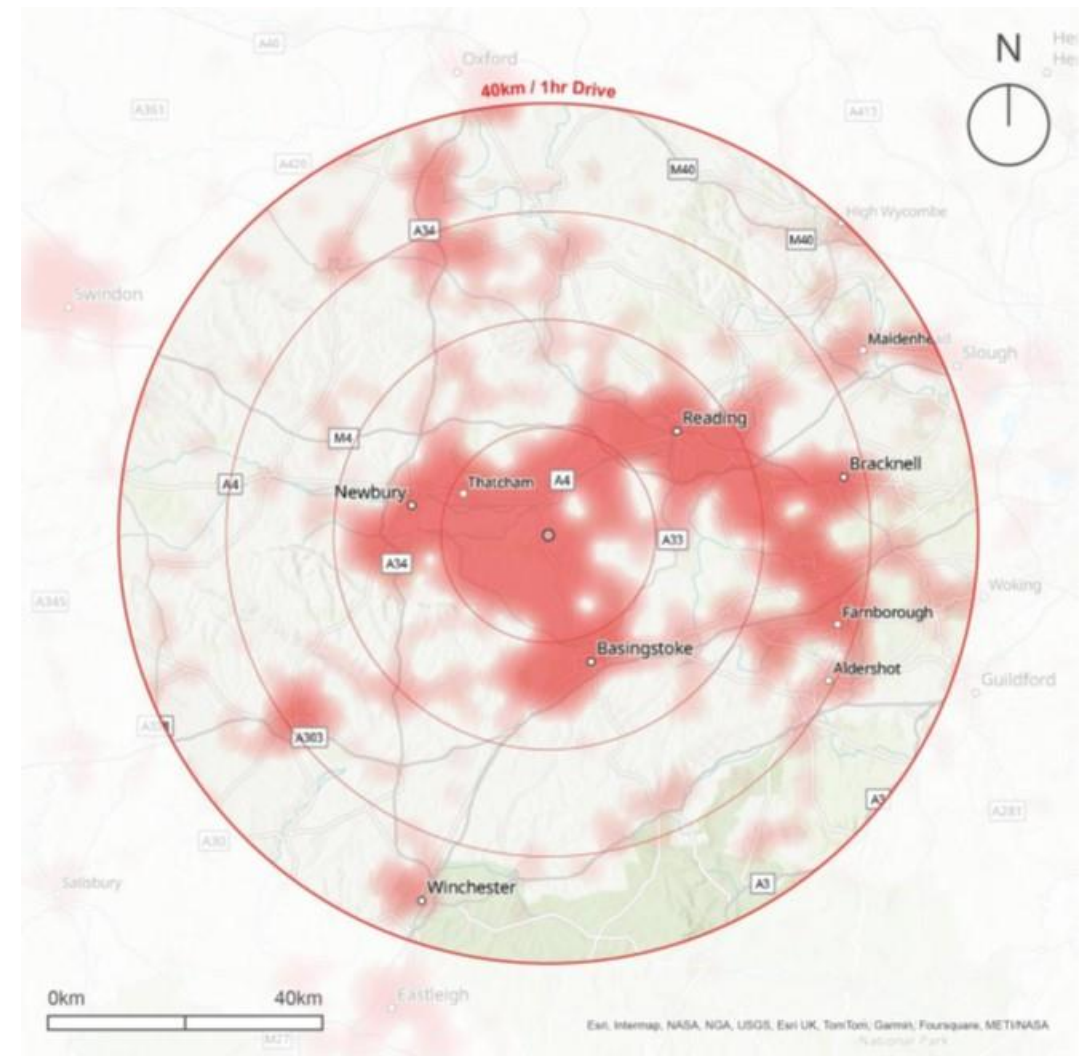
# Mobilityways AWE Travel Survey 2024

## Key Findings

AWE Aldermaston	AWE Burghfield
75% single occupancy vehicle (SOV) travel (same as gate survey)	88% SOV travel (4% higher than gate survey (note – excludes construction workers))
22% of respondents in favour of improved off-site walking and cycling routes	18% of respondents in favour of improved off-site walking and cycling routes
45% of respondents would use a regular AWE bus service (14% Basingstoke, 14% Reading, 10% Newbury / Thatcham and 7% Aldermaston railway station)	27% of respondents would use a regular AWE bus service
27% could be encouraged to Liftshare if they received help to find a Liftshare partner	30% could be encouraged to Liftshare if they received help to find a Liftshare partner
Evidence of staff being unaware of existing initiatives that are actually already provided	Evidence of staff being unaware of existing initiatives that are actually already provided

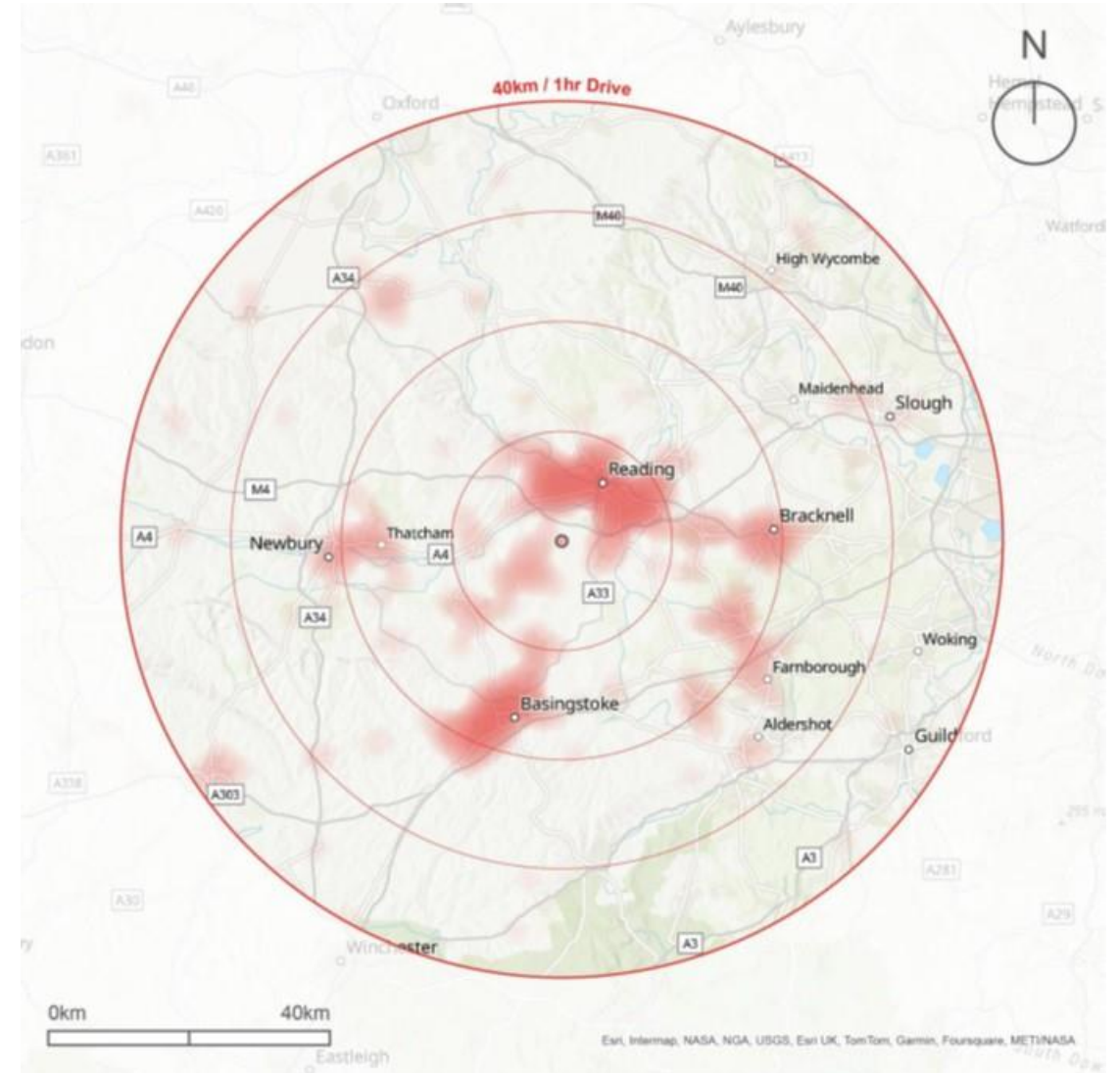
# Postcode Map - Aldermaston

- 6,409 (92%) employees have at least one sustainable mode available to them.
- 6,319 employees could car share (5,226 with more than 10 possible car share matches).
- 1,414 employees could cycle.
- 644 employees could cycle or walk.
- 1,715 employees could use public transport.



# Postcode Map - Burghfield

- 654 (86%) employees have at least one sustainable mode available to them.
- 654 employees could car share ( 388 with more than 10 possible car share matches).
- 104 employees could cycle.
- 2 employees could cycle or walk.
- 1 employee could use public transport.



# Travel Plan – Short Term Activity

- Promote existing initiatives that staff advised they were unaware existed (e.g. how to find a car share partner, the availability of Guaranteed Rides Home, local cycle routes etc).
- Implement new 'Quick Wins' including vegetation clearance on foot / cycleways, bike security stamping, bike shop discounts, seek to reinstate bike MOTs, bike repair kit provision, bike repair stations on site etc.
- Relaunch car share scheme in November 2024 in conjunction with Mobilityways – major relaunch to include portal and magazine articles, banners, posters, electronic advertising and animation video.
- Heavily promote active travel in Spring 2025.
- Offer Mobilityways Personal Travel Plans to staff.
- Potential implementation of pilot bus route to Aldermaston railway station.
- Roll out further EV parking spaces across both sites

Any questions?

[www.awe.co.uk](http://www.awe.co.uk)

© British Crown Owned Copyright 2024/AWE

AWE Nuclear Security Technologies is the trading name for AWE plc. AWE is a Non-Departmental Public Body owned by the Ministry of Defence. Registered in England and Wales. Registration no. 02763902

AWE plc Aldermaston, Reading, Berkshire, RG7 4PR

OFFICIAL



# AWE Infrastructure Investment Update

OFFICIAL

# Future Materials Campus

Update

7 November 2024





## Community engagement events update

- Six in-person and two virtual public events between 17 October and 28 November.
- Taking place across the local area.
- Experts from AWE will be attending to answer questions from residents and give information on our work.

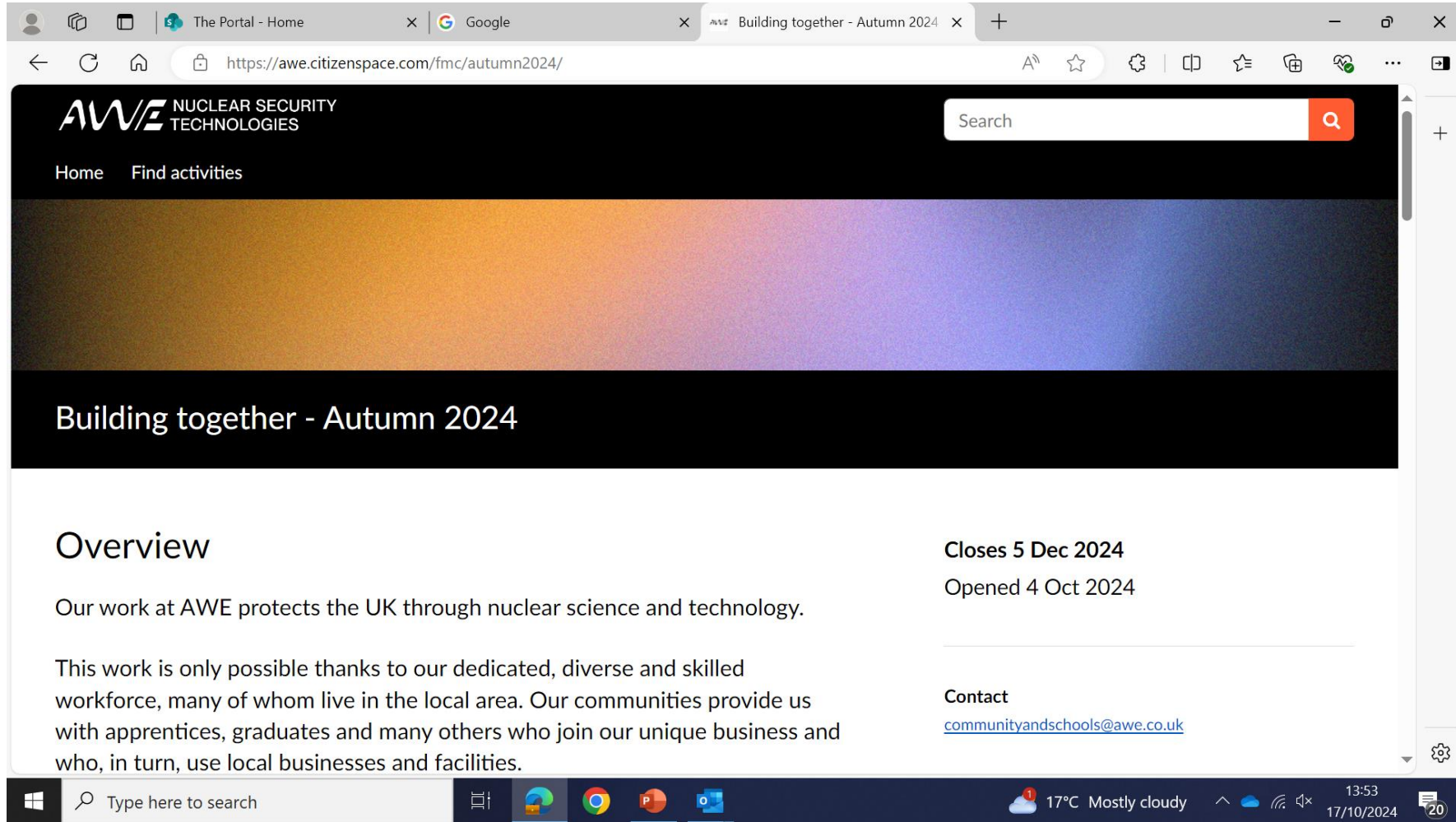
Date	Time	Location
<b>17 October 2024</b>	2pm - 8pm	<a href="#"><u>Aldermaston Parish Hall</u></a>
<b>23 October 2024</b>	2pm - 8pm	<a href="#"><u>Reading Town Hall</u></a>
<b>4 November 2024</b>	2pm - 8pm	<a href="#"><u>Burghfield Village Hall</u></a>
<b>9 November 2024</b>	12 midday - 5pm	<a href="#"><u>The Link, Tadley</u></a>
<b>13 November 2024</b>	10am - 11am	Online event (TBC)
<b>14 November 2024</b>	2pm - 8pm	<a href="#"><u>The Ark Centre, Basingstoke</u></a>
<b>18 November 2024</b>	2pm - 8pm	<a href="#"><u>Waterside Centre, Newbury</u></a>
<b>28 November 2024</b>	7pm - 8pm	Online event (TBC)

# Initial event feedback

- Attendees
- Areas of interest
- Other ways of engaging



# AWE community website



# Getting your ideas

OFFICIAL



# AWE Estates and Liabilities Update

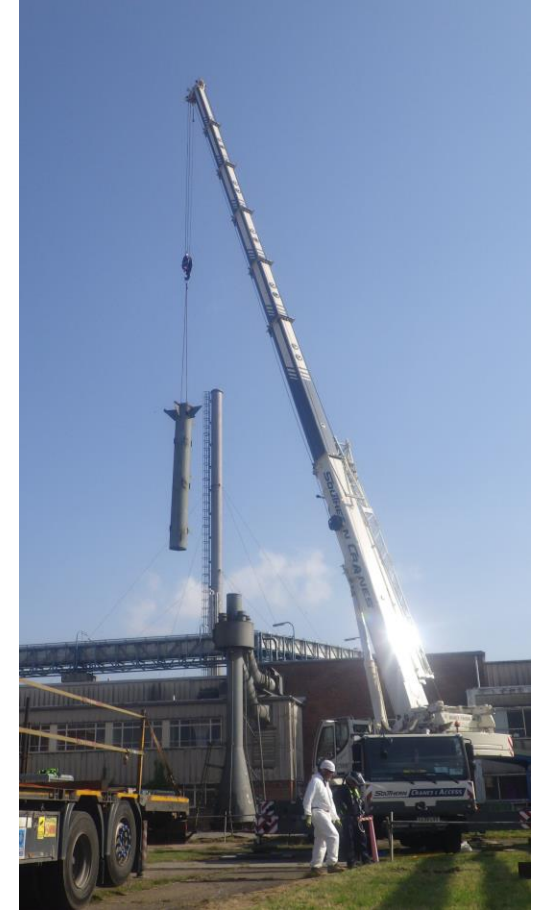
OFFICIAL

## Updates – Demolition/Dismantling AXXX Stack

The main discharge stack which once served the AXXX laboratory within the Old Waste Management Group area was demolished/dismantled last month.

Having been made redundant when the laboratory ceased operations almost 20 years ago, the stack no longer served a purpose. To reduce risk, it was agreed the demolition of the stack should be progressed ahead of completion of decommissioning activities within its donor facility.

This marks the **fourth** example of safe stack demolition within a high-hazard area.



# Updates - Demolition

DX.X demolition is progressing on schedule; the main building is due to complete during October, with the slab removal and site clearance during November and December. The project is forecast to complete well ahead of the March 2025 milestone date.



# Updates Decommissioning Ax.x Glovebox



This Glovebox is the first box to be decommissioned in Ax since 5th Feb 2015.

The glovebox weighed 30 tonnes and contained a furnace, a 30-ton press, a crane, and numerous sealed tins. With the exception of the baseplate, the team size reduced the glovebox into pieces by using scaffolding and hand tools, and ensuring they were small enough to fit into a 205-litre drum with a 160-litre lining.

Decommissioning gloveboxes can be a slow process due to the nature of the activities previously conducted within them. A team of five (or six if working at height) will work on the glovebox simultaneously. Due to suit constraints, each team member can spend up to 2.5 hours at a time working on the glovebox.



# Updates Decommissioning Ax Glovebox



Work has begun on the second glovebox to be decommissioned.

The windows of the glovebox have been removed and the scaffolding is now up.

# Recent Events

## Community Concerns

- Since the beginning of May 24 there have been 6 calls registered via the Community Concerns Line. These are triaged with 4 being categorised as being not directly associated with AWE operations. In these instances and if possible (some don't leave return contact details or wish to remain anonymous) the callers are advised and if applicable, suggestions made of where they might direct their concerns. Note, some calls are sensitive or personal and covered by GDPR hence not detailed here.
- Several emails received from 1 person relating to heavy traffic on the external roads around the perimeter of the Aldermaston Site. Our Roads and Grounds team were requested to review the on site traffic management arrangements and shortly afterwards the complainant wrote to thank Corporate Affairs for the prompt action taken as the situation had greatly improved.
- A call to the Community Concern Line reported of an alarm sounding at AWE(B) for a protracted period. This was investigated and found to be a faulty storm warning alarm. The issue was resolved to the satisfaction of the caller.

## Protestor Activity

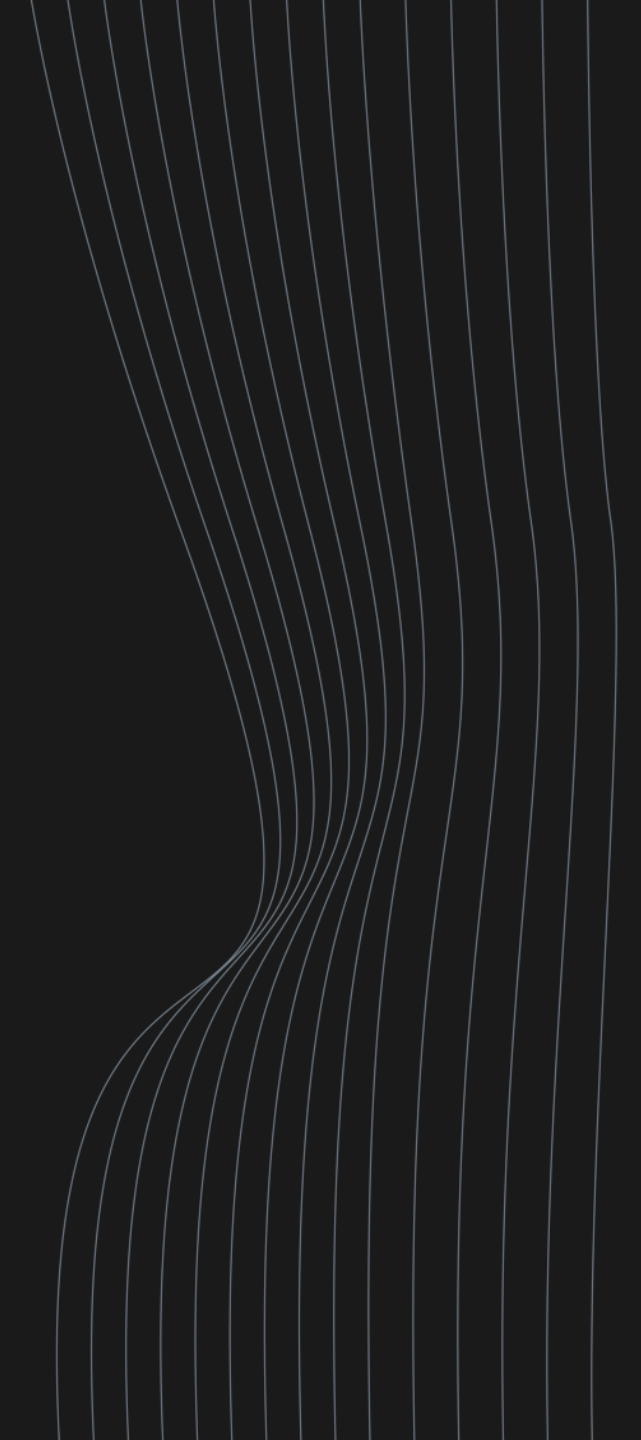
- Regular monthly 'Women's Peace Camp' 2<sup>nd</sup> weekend of each month (one per month)
- No other upcoming planned/known "Protest" activity

OFFICIAL



# AWE Community Update

OFFICIAL



# Our Community

**Charity  
partner PACT**

**Community  
drop in  
sessions**

**Schools'  
engagement**

**Increased  
apprentice  
intake**

**Time to Give  
Volunteering**

**West Berks  
Museum  
exhibition**



**Community  
Magazine Connect  
and Focus**

**Employee  
STEM  
Ambassador  
network**

**Sponsorship  
QMC, sponsored  
Masters, PhDS  
AND Post  
Doctorates**

**Environmental  
Orchards, flood  
protection, wild  
meadows, solar  
farms**

**National STEM  
Days Ada Lovelace  
Day, Environment  
Day**

**Annual Give a  
Gift  
collections**

# Our new charity partner - PACT



# Last school year (2023 – 2024) we reached...

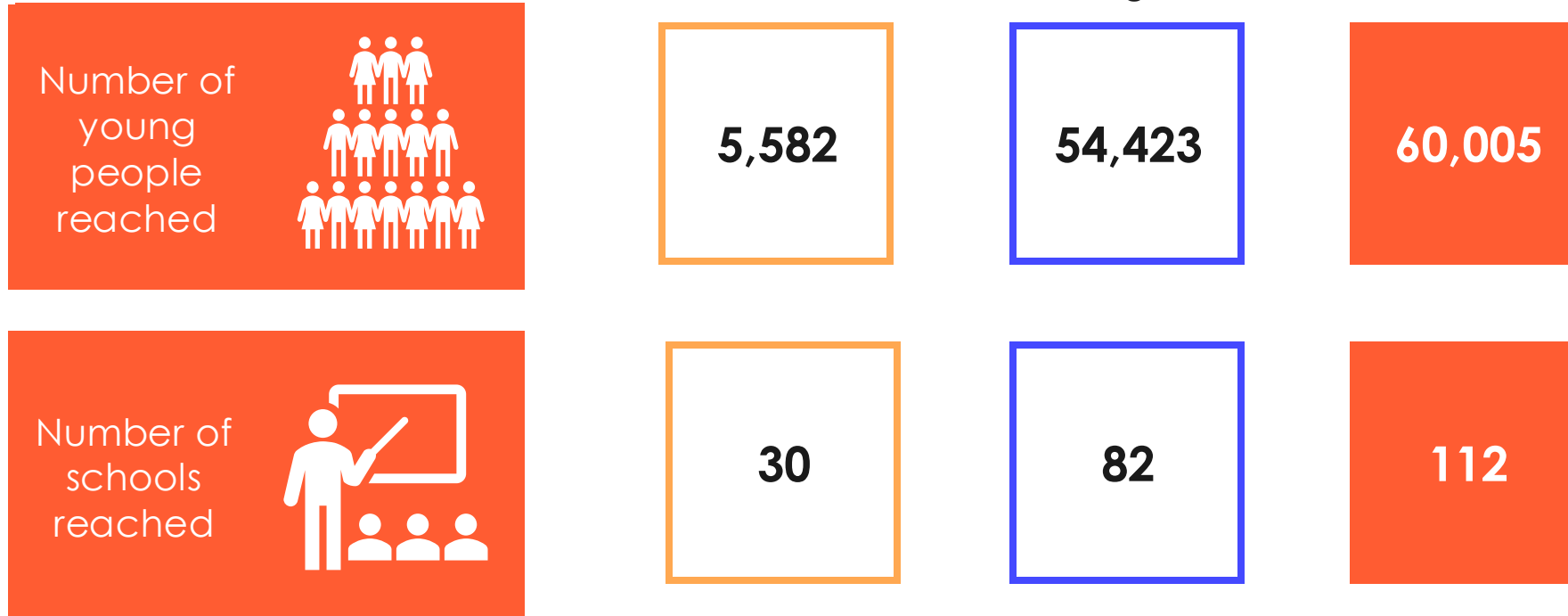


Primary Schools



Secondary schools and colleges

Total



# Looking forward – Primary schools

QMC Primary Science Centre

Primary Science Challenge

Ada Lovelace Day (organised by our gender balance working group)

Guess My Job workshops

Assemblies and presentations

People Like Me workshops

Self-service STEM workshop kits



Lunch – 45 minutes

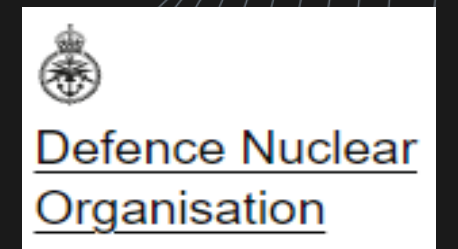
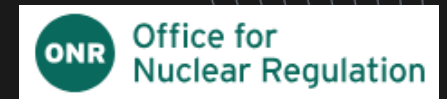
Reconvene at 13.00



OFFICIAL



# Regulators' Update



OFFICIAL



# DNSR Update

## Atomic Weapons Establishment



# DNSR Update

Atomic Weapons Establishment



# DNSR Vires

## *Where there are Disapplications, Exemptions or Derogations (DED) from Statute*

- When Class 1 (Explosives) and Class 7 (Radioactive) come together
- Through life safety focus
- Product / process / manufacture focus rather than facility
- ATC / XTC / EPURE





# Enforcement

- No Prohibition or Improvement Notices
- 10 x Corrective Action Requirements
  - **ATC** - PSA is incomplete
  - **ATC** - Treatment of fault sequences
  - **ATC** - Incorporate DSA 2B Issue 3
  - **ATC** - Further development of CAE
  - **ATC** - Justify seismic withstand
  - **ATC** - Establish tooling throughput and provision adequate facilities
  - **MENSA** - Strengthen ALARP case
  - **MENSA** - Treatment of fault sequences
  - **CORPORATE** – SQEP of AWE board





# Interventions

July 24 Themed Inspection at XTC – Specifications for the design, manufacture, materials and testing of NW components

September 24 AC17 Compliance Inspection at ATC – Adequacy of arrangements for the assembly / disassembly of NW

September 24 FAC1 Themed Inspection – duty of co-operation between ATC (LCP1) and convoy (LCP2)

Assessment of Level 1 emergency response exercises for AWE (B) May and AWE(A) October – assessed as adequate





# Questions

OFFICIAL



# Environment, Safety, Health & Quality Update

OFFICIAL



# Personal Safety

OFFICIAL

Resulting in:

**14**

injuries to members of staff

**17**

injured parties required one or more days away from work to recover

**454**

days lost

**0.234**

OSHA Rate per 200,000 hours worked

**22** people sustained work related injuries in the 12 months to the end of September 2024

We have applied a US Occupational Safety & Health Administration (OSHA) Classification to injury and illness records so we can benchmark against other UK and US operators who use the system. OSHA also provides a greater range of predefined injury classifications than RIDDOR, so is a better way to track personal injuries.

# Process Safety



Process Safety performance remains at an acceptable risk level. There have been six Process Safety Loss of Control/Containment events raised between 31<sup>st</sup> March – 30<sup>th</sup> September 2024. All six events have been investigated and appropriate preventative actions have been put in place. Process Safety training remains a priority and bespoke process safety training is being delivered to Tech Centers commencing with XTC.

The Process Safety Team are also continuing to develop virtual reality training that can be used to raise hazard awareness amongst staff at all levels of the organisation. Phase 1 is complete and has been shared with the Executive. The next stage of Extended Reality delivery is being progressed with XTC with further scenarios being discussed.

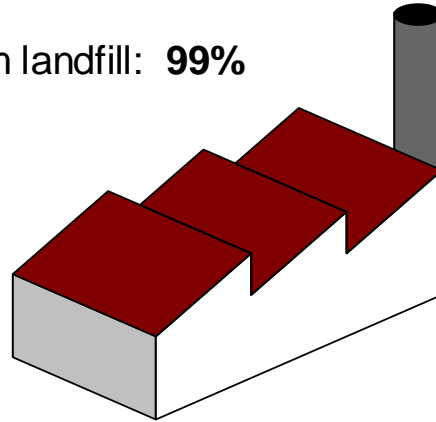
## Number of Events Notified to the ONR by Calendar Year:

2015	2016	2017	2018	2019	2020	2021	2022	2023	2024
22	25	38	38	37	64	69	61	39	20 to end of September

# Our Commitment to Protecting the Environment & People

## Waste Management

The Environment Management target for diverted from landfill: **99%**  
Total waste diverted from landfill: **99.3%**



## Nuclear Worker

Annual UK Occupational Dose Limit: **20,000  $\mu$ Sv**  
AWE Individual Radiation Dose: **780  $\mu$ Sv**



## Discharge to Air

Maximum Dose Aldermaston: **1.8  $\mu$ Sv**  
Maximum Dose Burghfield: **< 0.1  $\mu$ Sv**



## Trade Effluent

Maximum Dose Aldermaston: **< 0.1  $\mu$ Sv**  
Maximum Dose Burghfield: **< 0.1  $\mu$ Sv**



## Discharge to Water

Maximum Dose Aldermaston Stream: **< 0.1  $\mu$ Sv**



## Direct Dose at Site Boundary

Maximum Dose Aldermaston: **11  $\mu$ Sv**  
Maximum Dose Burghfield: **indistinguishable from natural background**

### Radiation dose put into context:

Annual UK non-occupational radiation dose is 2,700  $\mu$ Sv.  
This is the average level of radiation dose that a person resident in the UK will receive each year from background sources of radiation.

### Assessed public dose put into context:

A dose of 10  $\mu$ Sv (microsieverts) is comparable to that expected to be received from eating a 100g bag of Brazil nuts.

OFFICIAL



# AWE Emergency Planning and Response Update

OFFICIAL

# Recent Events

OFFICIAL

- **We are pleased to report that the Level 1 Exercise run on 8 October 2024 was assessed as an ‘adequate’ demonstration of our Emergency Response Arrangements by our regulators. Adequate is the ONR term used for a successful demonstration.**
- A Level 1 exercise is a major exercise required by our regulators to demonstrate our site emergency response arrangements to address the consequences that could occur from an emergency on our sites. Our Aldermaston and Burghfield sites are required to run these annually.
- The exercise focused on an emergency in one of our radioactive material facilities and a simulated release of material from that facility.
- This included casualties who required rescue, treatment, monitoring and decontamination; a simulated release of radioactive material offsite and associated implementation of public protection processes
- A wide range of responders participated including our Fire and Rescue Service, Ministry of Defence Police, Paramedics, Safety Shift, Health Physics, RPAs, Emergency Managers, Facility Staff, Security, West Berkshire District Council, Duty Site Manager and a full suite of Subject Matter Experts from across the business.
- Our CEO and other Exec members joined us to observe the exercise.
- Some initial highlights were:
  - Strong command and control in all areas.
  - Wider use of JESIP – Joint Emergency Services Interoperability Principles.
  - Good understanding and awareness of risks and hazards.

# Recent Events

OFFICIAL

- **On May the 14<sup>th</sup> the AWE Burghfield Level 1 exercise was completed which also was assessed as an ‘adequate’ demonstration of our Emergency Response Arrangements by our regulators.**
- This exercise focused on an emergency in one of our radioactive and explosives material handling facilities.
- This included casualties who required rescue, treatment, monitoring and decontamination; management of a simulated fire and fire spread prevention, hazard and consequence analysis.
- A wide range of responders participated including our Fire and Rescue Service, Ministry of Defence Police, Paramedics, Safety Shift, Health Physics, RPAs, Emergency Managers, Facility Staff, Security, Duty Site Manager and a full suite of Subject Matter Experts from across the business.
- Some highlights were:
  - Strong responder monitoring and contamination assessments
  - Continued deployment of JESIP

# On-going Activities

- Continued support to WBDC in respect to the Off Site Emergency Plan (OSEP).
- Attendance at the Off Site Plan Working Group
- Co-delivery of briefings to Schools as part of the awareness program with WBDC in respect to AWE and the Off Site Emergency Plan
- AWE internal REPPIR reviews in accordance with regulatory renewal periods.

OFFICIAL



# AWE Uncrewed Vehicle System Team Update

OFFICIAL



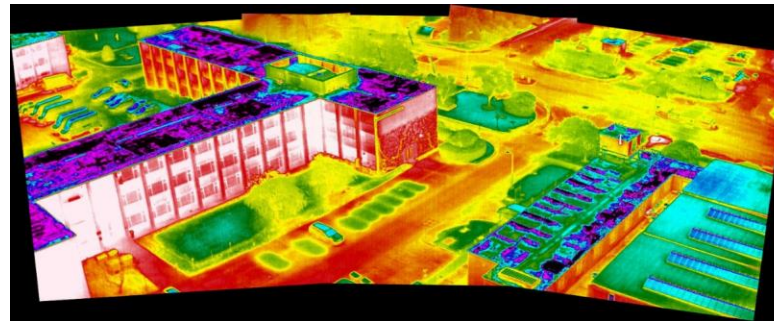
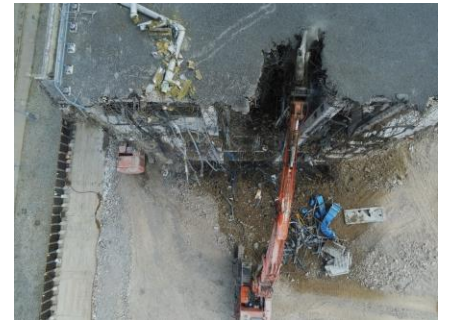
# Who are the UVS Team?

- Established in 2018 as a proposal to bring Drones (UAV now UVS) to AWE sites.
- Proof of concept completed, and team given the go ahead to grow organically early 2021
- 2021-2023 team expands to 2 full-time members and 3 support pilots
- 2023 recruited 2 new full-time members

# Our Equipment

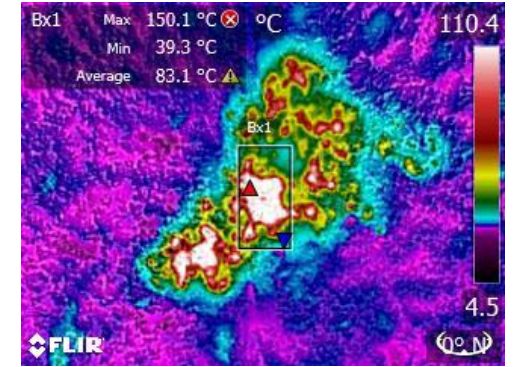
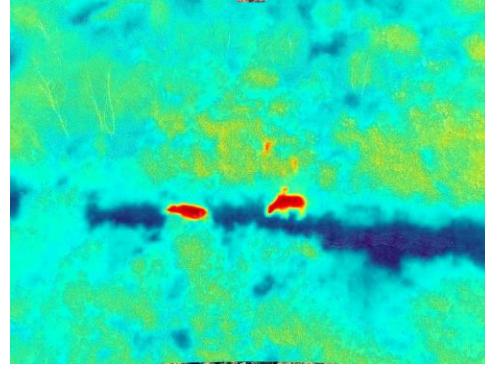


# Uses at our Sites



# Uses in our Community as part of our Volunteering initiative 'Time to Give'

OFFICIAL



OFFICIAL

# Future Operations

- Completion of mapping our sites
- More ground-based inspections
- More internal inspections
- More collaboration (UK and US)
- Volunteering support for LLC
- Cleaning of building windows and cladding across our sites
- Working closer with emergency services and response teams



# Questions?

OFFICIAL

**ANVE** NUCLEAR SECURITY  
TECHNOLOGIES

Any Other Business

OFFICIAL

# Next Meeting Date

111 LLC

Thursday 24<sup>th</sup> April 2025



[www.awe.co.uk](http://www.awe.co.uk)

© British Crown Owned Copyright 2024/AWE

AWE Nuclear Security Technologies is the trading name for AWE plc. AWE is a Non-Departmental Public Body owned by the Ministry of Defence. Registered in England and Wales. Registration no. 02763902

AWE plc Aldermaston, Reading, Berkshire, RG7 4PR